

PROMOTED BY



Promoted for and behalf of Cycling Time Trials under its Rules, Regulations and Conditions

veloviewer

93<sup>RD</sup>  
1930-2023

# MONSAL HILL CLIMB

MONSAL HEAD, GREAT LONGSTONE, DERBYSHIRE

11:00AM SUNDAY 1ST OCTOBER



©Tony Wood.

# RIDER MANUAL

SUPPORTED BY





Dear Riders,

Many thanks for supporting the 93rd VeloViewer Monsal Hill Climb. Without you, we have no event, so a big thanks from me for entering our event this year. We have a new headline partner this year, VeloViewer. Subscribing to VeloViewer provides new insights, engaging visualisations, motivational goals and in-depth analysis to your Strava data, so check them out online and support those who support us.

I would also like to thank VeloViewer, Langsett Cycles, Skyhook Coaching, Velotastic, Simon Warren from 100 Climbs, Big Bobble Hats, Trek Bakewell, St John Ambulance, Chatsworth Estates, Derbyshire Dales District Council, Litton & Cressbrook Parish Council, Keith Adamson and Little Longstone Village Group, Derbyshire Police, Monsal Head Hotel and Hobb's Cafe. Without their help, this event just simply wouldn't happen.

As always we have live commentary from Vin Cox and Rapid Rich Stoodley. Marshals and helpers will be Sheffrec members, friends and family.

Please carefully read this manual as I have worked hard over the past 14 years to make sure that we come and go in a way that doesn't upset the local residents and that we all respect the area. We want to ensure that we can continue promoting this amazing end of season event in the heart of the beautiful Peak District National Park for many years to come.

Marc Etches  
Event Organiser.

## Event Schedule

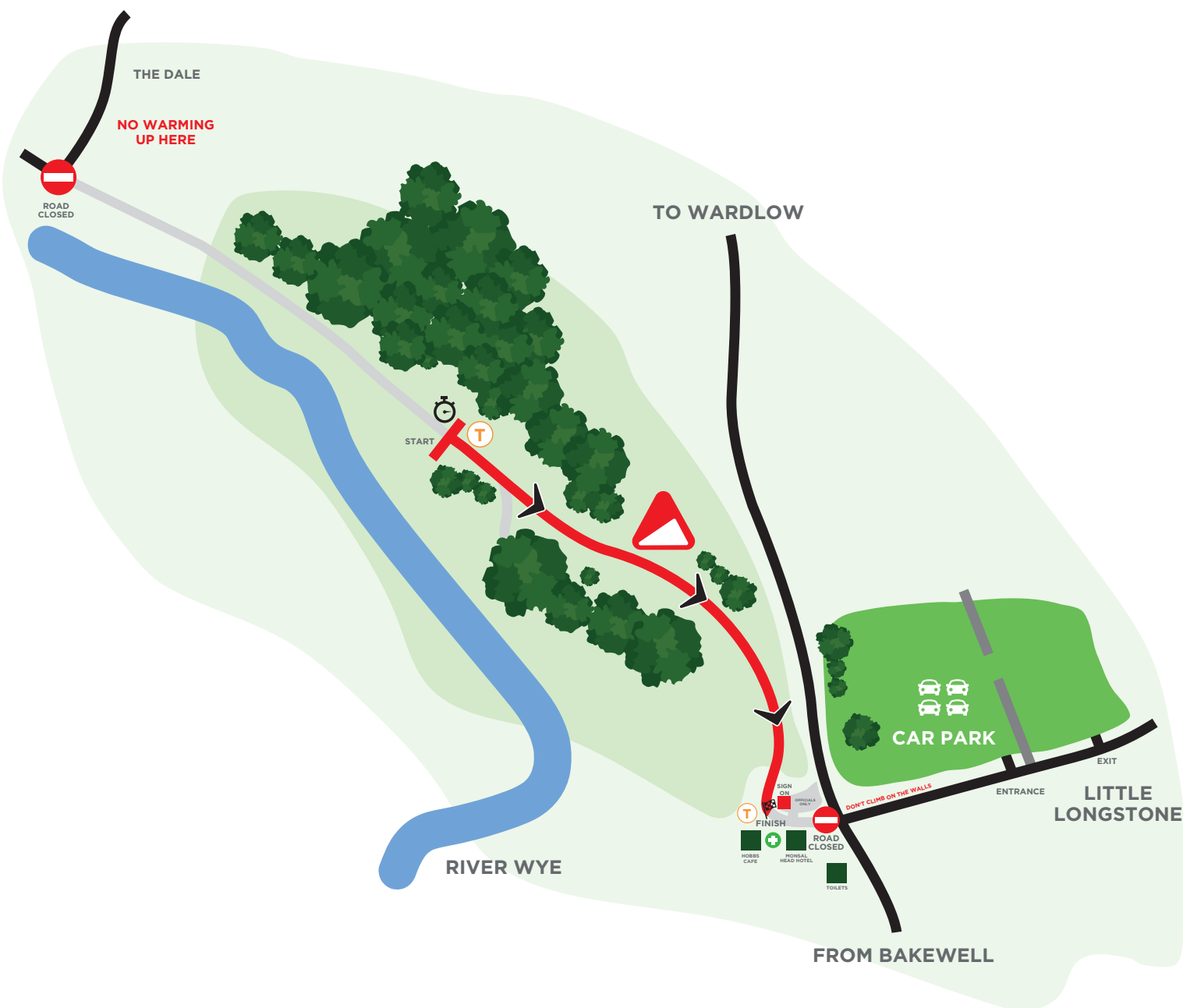
- 09:00 Car park opens
- 09:30 Road closure of Monsal Head commences
- 09:30 Signing on opens
- 09:45 Course warm up opens
- 10:45 Course warm up closes
- 10:50 Live commentary commences
- 11:01 First rider starts**
- 14:16 Last rider starts**
- 14:35 Prize presentations
- 15:30 Monsal Head re-opens
- 16:30 Car park closes

# Event Map

The event is situated at Monsal Head, Great Longstone, Nr Bakewell, Derbyshire.

Please use the postcode **DE45 1NN**

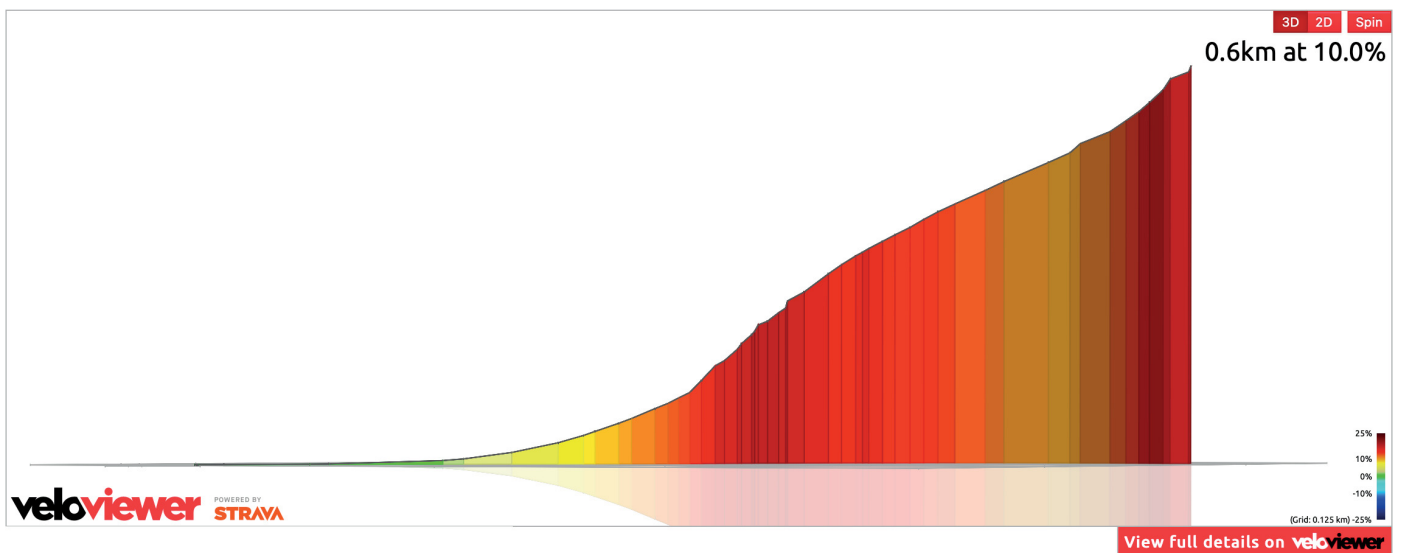
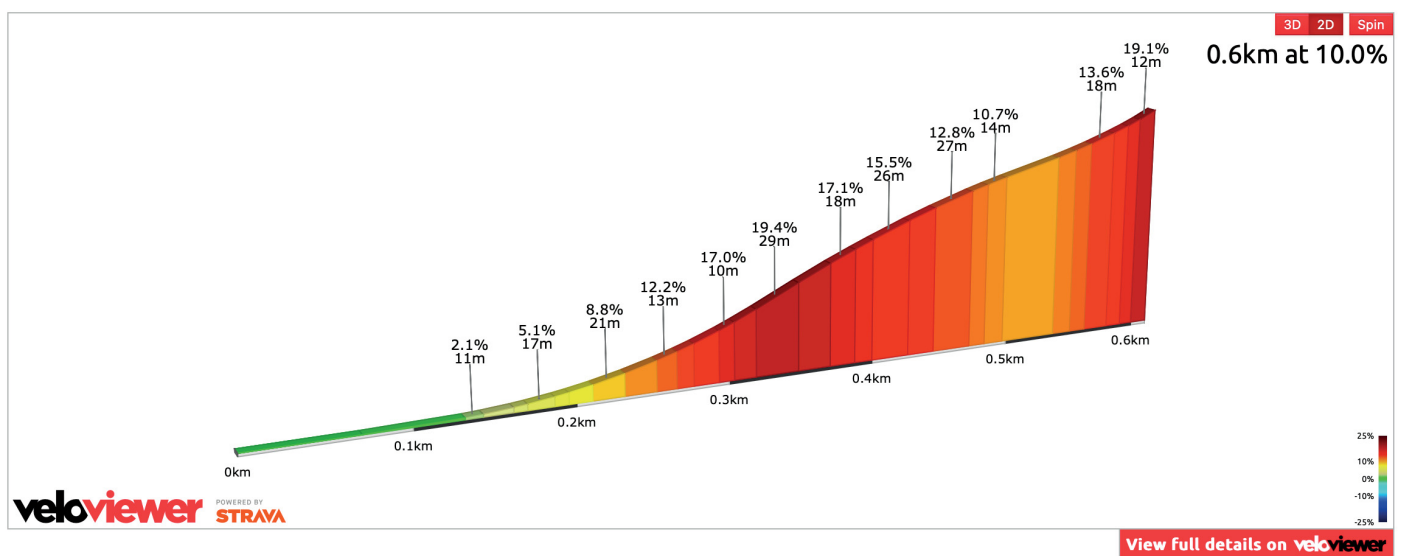
what3words: [///topic.cheater.fussy](https://www.what3words.com/#!/topic.cheater.fussy)



## The Climb

Monsal hill climb is 675 yards/600m with a gradient of 1 in 6, suitable for fixed gear.

Some describe the climb as a sprinters climb. The start is pretty much flat for the first 150 yards but soon starts to climb once you pass the drive way on your right. All then goes quiet for while until you can hear the roar of the crowd. Once you pass the road sign on your left the lactic kicks in and from there till the end is a non stop effort to the line which is right outside the Monsal Head Hotel and Hobbs Café.



## Event Directions. HQ – Monsal Head

The event is situated at Monsal Head, Great Longstone, Nr Bakewell, Derbyshire. Follow the A6 from Bakewell towards Buxton, turn right at Ashford in the Water onto the A6020, proceed 200 yards and turn left onto the B6465. Turn first right in Ashford and proceed for approx 3 miles towards Little Longstone / Wardlow.

**Sat Nav users please use the postcode DE45 1NN. what3words: ///topic.cheater.fussy**

## Parking

In order to keep traffic flowing on the day, all competitors and spectators are encouraged to park in the field just outside Little Longstone. This will be clearly signed posted. There is a charge of just £2.00 and it is cash only. All funds raised will be donated to the Little Longstone Parish Church. Over the years we have raised thousands of pounds and this really does help us maintain a good relationship with the local residents. Once parked, please leave via the gate you entered and don't climb over any of the stone walls as they are very fragile.

The car park at the top of Monsal Head is only available for officials and traders. Access will only be granted when an official pass is shown.

Please don't park on the main road from Ashford to Wardlow as that is the diversion route and we would like to keep this as clear as possible during the event.

## Signing On

Signing on opens at 9:30am and is situated at the top of the climb. All riders must sign on, collect a body number, arm number and pins. Please allow enough time to arrive, park and walk up to sign on. We don't close signing on so it's up to individual riders to allow enough time before their run. All under 18's must bring a completed Parental Consent Form with them. Link here to download:

<http://www.monsalhillclimb.com/wp-content/uploads/2018/08/Monsal-Parental-Consent-Form.pdf>

There will be copies available at signing on if needed.

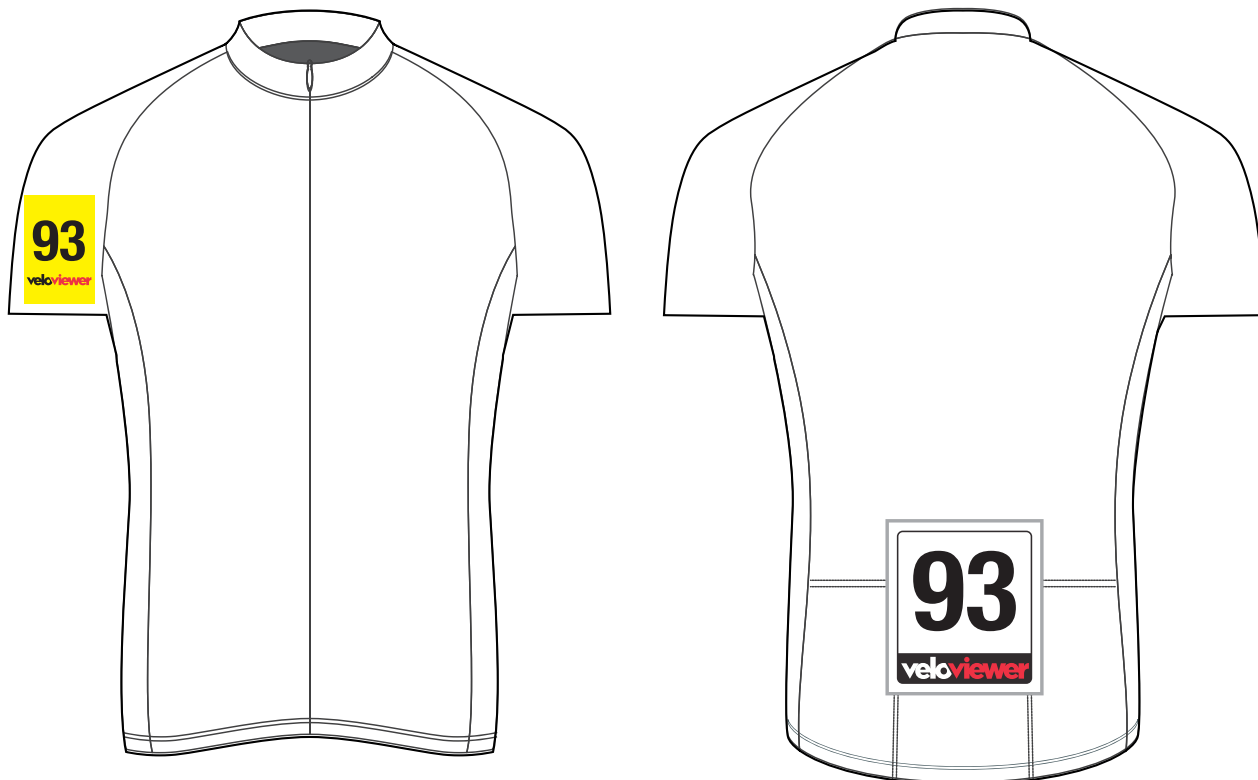
## Signing Out

All riders must sign out after their run. This is a strict CTT rule. Any riders that fail to sign out will be disqualified from the event. This event could be subject to a random UK Anti Doping test.



## Race numbers

You will be issued with 2 non-returnable race numbers. One is for the rear of your jersey and one is for your right hand upper arm, as shown in the diagram below:



## Rider Safety

CTT regulations state that hard shell helmets are now compulsory for everyone, so please wear one at all times. Working front and rear lights are also compulsory for all riders. Please make sure that you have one on your bike before you start. The timekeepers will decline you at the start if you don't have a helmet or two working lights.

At the top of the climb, we will have a team of catchers to ensure that you finish your run safely.

Often riders do collapse once over the finish line and the one before you may be laid in your path, so please take instructions from them at the top of the climb. They are there to make sure that the whole area is safe for you finish and recover from your heroic effort.

## Getting to the Start Line

We allow riders to descend down Monsal Head to the start. This is managed by marshals so please await their instructions when heading to the start. Once you have been given permission to drop down the climb, please be aware that after the closed barrier section, spectators will be on the course watching riders coming up the climb, potentially with their back to you so please keep your speed to a minimum and if you do see another rider coming up the climb, please pull to one side and if needed stop to allow them a clear run. The road is closed to traffic but if you do see a car on the route, it will have been given permission for access. There is a private house and a fishing club car park on route which we need to allow access to during the event. For the duration of the event, the road will allow access for emergency vehicles. Please do not cross the start line once you are the bottom of the climb or make any U turns in sight of the start. If you leave any clothing at the start it will be returned to signing on at the end of the event. Please remember to collect before you head home.

## First Aid

The First Aid point will be in the Monsal Head Hotel Stables Bar. This is behind Hobbs Café, opposite signing on. Our Medical team will be on site from 10:30am until the conclusion of the event. The nearest hospitals are in Sheffield (Northern General Hospital) or Chesterfield (Chesterfield Royal Hospital).

## Start Times

All riders are allocated a time slot which corresponds with your race number. All riders start at 1 minute intervals and should be at the start in plenty of time to line up in order. At 30 seconds, you'll be called to the start line and held by our team of helpers. You'll receive a countdown before you are allowed to start. If for any reason you miss your start time, you will receive a time penalty. If there is a start time free, the timekeepers will allow you to start late with the penalty applied to your overall time.

## Warming Up

Most riders use rollers and turbo trainers but you can warm up on roads around the area. Please don't warm up on the diversion route of Haydale as we want to try and keep this free for local traffic to travel towards Cressbrook. The climb will be closed from 9:30am and will be open to use for warming up from 9:45am and course familiarisation until 10:45am. Please do not warm up on the course once the event starts at 11:01am.



## Refreshments

There will be hot drinks and food available from the Monsal Head Hotel and Hobb's Cafe. Please support them.

## Toilets

There are toilets on site run by the Monsal Head Community Toilets C.I.C. The toilets at Monsal Head were closed in May 2018 after a review by the local council. Two local councillors have worked with the District and local Parish Councils to re-open them and will eventually own them with a Community Asset Transfer. These are situated just behind the Monsal Head Hotel. The toilets run solely on donations, so if you do use them, please make a donation to help keep these running all year round. The event will make a donation but we would really appreciate if you could drop a donation in one of the boxes which are outside both entrances.

## Results

Times will be posted at the signing on area on boards. We will be using ResultSheet showing live results on the day. A QR code will be available to scan and view on race day.

We will publish provisional results on the event website as soon as possible after the event and submit to CTT a few days after. If you have any queries, please let us know asap.

## Prize Presentations

There will be a prize presentation around 20 minutes after the last rider has finished their run at the top of the climb. The top 3 in all categories will be called forward and presented with their prize in line with the published prize list. If you think you are in the top 3, please stay for the presentation. Langsett Cycles spot prize vouchers will be sent out via post after the event. If you miss your prize presentation, we'll contact you after the event to arrange collection.

## Trophies

All trophies are to be kept for 12 months and must be returned after this period. We are happy for you to engrave them. If you do arrange to engrave them, save your receipt and we will gladly re-inburse you.

## Prize Money

All prize money will be paid via BACS. We will send an email out requesting bank details a few days after the event. If all riders can return this asap, that would be great as we like to transfer all funds in one go. The email will be sent to the one submitted on entry.

## Prize List

### Overall - Dick Aldridge Memorial Trophy

1st	£200.00 + Big Bobble Hat
2nd	£125.00
3rd	£100.00
4th	£80.00
5th	£70.00
6th	£60.00
7th	£50.00
8th	£40.00
9th	£30.00
10th	£20.00

### Women Overall - HMT Cup

1st	£200.00 + Big Bobble Hat
2nd	£125.00
3rd	£100.00
4th	£80.00
5th	£70.00
6th	£60.00
7th	£50.00
8th	£40.00
9th	£30.00
10th	£20.00

### Fastest Team of 3 - Doug Bond Cup

£10.00 + Velotastic Cap each

### Langsett Cycles Spot Prizes

30th, 40th, 50th, 60th, 80th, 100th, 120th & 140th

£15.00 Langsett Cycles Gift Vouchers

### Lanterne Rouge - Last Placed Rider

RED (Rouge) Rear Light from Langsett Cycles

### **Veteran Men (VM) (40-49) - Cope Trophy**

1st £40.00 + Big Bobble Hat - 2nd £25.00 - 3rd £15.00

### **Veteran Men (V50+) (50+) - Cliff Newell Tankard**

1st £40.00 + Big Bobble Hat - 2nd £25.00 - 3rd £15.00

### **Veteran Women (VW) (40+) - VeloViewer Cup**

1st £40.00 + Big Bobble Hat - 2nd £25.00 - 3rd £15.00

### **Junior Men (JM) (16-18) - Weston Park Trophy - Supported by Trek Bakewell**

1st Velocism Helmet

2nd Bontrager R3 tyres X2

3rd Styrkr Nutrition bundle

### **Junior Women (JW) (16-18) - Skyhook Coaching Trophy - Supported by Trek Bakewell**

1st Velocism Helmet

2nd Bontrager R3 Tyres X2

### **Juvenile Boy (JB) ( Under 16) - Nightingale Trophy - Supported by Langsett Cycles**

1st £40.00 + Langsett Cycles Prizes, Velotastic Cap & 100 Greatest Cycling Climbs of Spain Book

2nd £25.00 + Langsett Cycles Prizes & 100 Climbs Cap

3rd £15.00 + Langsett Cycles Prizes

### **Juvenile Girl (JG) ( Under 16) - Yondermann Cafe Trophy - Supported by Langsett Cycles**

1st £40.00 + Langsett Cycles Prizes, Velotastic Cap & 100 Greatest Cycling Climbs of Spain Book

2nd £25.00 + Langsett Cycles Prizes & 100 Climbs Cap

3rd £15.00 + Langsett Cycles Prizes

### **Trikes**

1st £40.00 + Big Bobble Hat

2nd £25.00 + 100 Climbs Cap

3rd £15.00 + Velotastic Cap

### **Most Distressed Finisher** (Judged by Marc Etches & Race Commentary Team)

100 Greatest Cycling Climbs of Spain Book

## Rider List & Start Times

No.	Start	Name	Club/Team	Cat
1	11:01	George Anthony	Matlock CC	JB
2	11:02	Miles Oakes	Ilkeston Cycle Club	JB
3	11:03	Fred Havercroft	Matlock CC	JB
4	11:04	Yvonne Twelvetree	Sheffield Triathlon Club	VW
5	11:05	Rowan Sudbury	Matlock CC	JB
6	11:06	Eric Perkins	Ilkeston Cycle Club	JB
7	11:07	Celia Brown	Elevate RT	VW
8	11:08	Ethan Taylor	Beacon Roads CC	JB
9	11:09	Karl Wooffindin	Team Lifting Gear Products	M
10	11:10	Seraphina Green	Sheffield Youth Cycling Club	JG
11	11:11	Bobby Cooper	Clancy Briggs Cycling Academy	JB
12	11:12	Gary Wright (Trike)	Calder Clarion	V50+
13	11:13	Alfie Astles	Matlock CC	JB
14	11:14	Lukas Barton	Sheffield Youth Cycling Club	JB
15	11:15	Catherine Turan	Sheffrec CC	VW
16	11:16	Christopher Maffei	Bury Clarion CC	V50+
17	11:17	Mandie James	Ilkeston Cycle Club	VW
18	11:18	Oliver Coefield	Sheffield Youth Cycling Club	JB
19	11:19	Stanley Perkins	Ilkeston Cycle Club	JB
20	11:20	William Barker	Paceline RT	VM
21	11:21	Mandy Hibberd	Rapha Cycling Club	VW
22	11:22	Matt Johnson	Chorlton Velo	M
23	11:23	Chris Potts	Farnham RC	V50+
24	11:24	Holly Carter	Manchester Wheelers	W
25	11:25	Benjamin Rawsthorne	Waldy Wheelers	M
26	11:26	Ian Pike (Trike)	Lincoln Wheelers CC	V50+
27	11:27	Sam Amps	Beeston Cycling Club	M
28	11:28	Frederick Farr	Matlock CC	JB
29	11:29	Olivia Marriott	Derby Mercury R C	JG
30	11:30	Mikey Heathcote	Buxton CC/Sett Valley Cycles	VM
31	11:31	Lawrence Martin	Thanet RC	V50+
32	11:32	Kate Morris	Sheffield Triathlon Club	VW
33	11:33	Shelley Childs	Ystwyth CC	V50+
34	11:34	Grant Womack	Ludlow Brewery Race Team	VM
35	11:35	Mike Sirett	Welland Valley CC	V50+
36	11:36	Cody Bassett	Derby Mercury R C	JB
37	11:37	Mark Buskwood	Common Lane Occasionals	V50+
38	11:38	Samantha Percival	Chester Triathlon Club	W
39	11:39	Christopher Woolley	Buxton CC/Sett Valley Cycles	V50+
40	11:40	Rory Marsh	Edinburgh Road Club	M
41	11:41	Rachael Lundgren	Yorkshire Rose Cycling Club	W
42	11:42	Rob Tomlinson	South Normanton C C	VM
43	11:43	Theresa Sharland	Ystwyth CC	W
44	11:44	Andy Pearson	Serpentine Running Club	VM
45	11:45	Felix Oliver	Sheffield Youth Cycling Club	JB
46	11:46	Dave Mason [Trike]	Lincoln Wheelers CC	VM
47	11:47	James Warner Smith	North Norfolk Whs	M
48	11:48	Ruth Dunstan	Kendal Cycle Club	W
49	11:49	Lola Ellis	Jadan Vive Le Velo	JW
50	11:50	Dale Wilkes	Mansfield Road Club	VM

## Rider List & Start Times

No.	Start	Name	Club/Team	Cat
51	11:51	Jonathan Pupius	7 Hills Cycling Club	VM
52	11:52	Phillip Sanderson	myhillcycling.co.uk	M
53	11:53	Richard Knowles	Stafford RC	V50+
54	11:54	Stuart Jameson	Solihull CC	VM
55	11:55	Sean Reek	Ilkeston Cycle Club	V50+
56	11:56	Finn Miller	Matlock CC	JB
57	11:57	Jack Ratcliffe	Apache Brave Racing	M
58	11:58	Niall Read	South Normanton C C	M
59	11:59	Daniel Tisdall	Sheffrec CC	M
60	12:00	Robert Curtis	University of Sheffield Cycling Club	M
61	12:01	Khaled Balabil	Holmes Chapel Velo	V50+
62	12:02	Louie Trezise	Macclesfield Wheelers	M
63	12:03	Ashley Steventon	Royal Air Force Cycling Association	M
64	12:04	Josh Stringfellow	Virtual Cycling Club	M
65	12:05	Andy Newham (Trike)	Lincoln Wheelers CC	V50+
66	12:06	Richard Latimer	Welland Valley CC	VM
67	12:07	Robert Sansby	Leicestershire RC	M
68	12:08	Andy Smith	Mansfield Road Club	V50+
69	12:09	Paul Kippax	Rutland Cycling Club	V50+
70	12:10	Alice Larkin	Glossop Kinder Velo Cycling Club	VW
71	12:11	Mark Conanughton	Fusion Cycling Club Dronfield	V50+
72	12:12	Jamie Brough	Matlock CC	JB
73	12:13	Phillip Evans	Beeston Cycling Club	M
74	12:14	Ben Lee	Apache Brave Racing	M
75	12:15	Paul Faulkner	Common Lane Occasionals	V50+
76	12:16	Daniel Farrand	TrueSapien	VM
77	12:17	Stephen Greenway	7 Hills Cycling Club	M
78	12:18	Steve Oakes	Ilkeston Cycle Club	V50+
79	12:19	Richard Walker	VTTA (North Midlands)	V50+
80	12:20	Laurie Stobbs	Trek Bicycles Bakewell	VM
81	12:21	Nikolas Heinloth	Manchester Triathlon Club	M
82	12:22	Chris Stray	Fusion Cycling Club Dronfield	M
83	12:23	Thomas Turton	Macclesfield Wheelers	M
84	12:24	Bradley Dawson	Sheffrec CC	M
85	12:25	Brian Hygate	Fareham Wheelers CC	V50+
86	12:26	Mathilde Pauls	Look Mum No Hands!	VW
87	12:27	Nick Burton	Newark Castle C C	VM
88	12:28	Mark Proctor	Matlock CC	M
89	12:29	John Hind	Bolsover and District CC	V50+
90	12:30	Paul Shardlow	Rapha Cycling Club	M
91	12:31	Callum Spencer	7 Hills Cycling Club	M
92	12:32	Ffyona Booker	SUMMAT CC	W
93	12:33	Chris Kaye	Ilkeston Cycle Club	VM
94	12:34	Gareth Tupling	Sitwell Cycling Club	VM
95	12:35	Abbie Taylor	Fusion Cycling Club Dronfield	W
96	12:36	Josh Thorpe	Buxton CC/Sett Valley Cycles	M
97	12:37	Ben MacKinson	Apache Brave Racing	M
98	12:38	Dan Swain	Velo Bavarian	M
99	12:39	Steve Thomas	Bristol Road Club	V50+
100	12:40	Alastair Johnstone	7 Hills Cycling Club	M

## Rider List & Start Times

No.	Start	Name	Club/Team	Cat
101	12:41	Luke Dabbs	Rossendale RC	M
102	12:42	Lydia Turan	JRC Interflon Race Team	JW
103	12:43	Matthew Coates	OVB	M
104	12:44	Benjamin Jordan	Velo Bavarian	M
105	12:45	Dean Johns	VTTA (Yorkshire)	VM
106	12:46	Oliver Glen	Reifen Racing	M
107	12:47	Owen Edwards	Elysium Kalas Race Team	M
108	12:48	Paul Roby	Lancashire RC	V50+
109	12:49	Joseph Bullock	University of Nottingham C C	M
110	12:50	Maia Howell	Matlock CC	JG
111	12:51	Jon Bray	Rapha Cycling Club	VM
112	12:52	Kieron McAvoy	Trek Bicycles Bakewell	M
113	12:53	Harry Lea	Geared Up & CN Cycles RT	M
114	12:54	Chris Spencer	Congleton CC - MyWindsock	M
115	12:55	George Daly	Sitwell Cycling Club	M
116	12:56	Barnabas Pickford	University of Nottingham C C	M
117	12:57	Brodie Johnson	Beeston Road Club	JB
118	12:58	Olivia French	Stolen Goat Race Team	W
119	12:59	Martin Ramsdale	Verulam CC	M
120	13:00	Simon Warren	Norwood Paragon CC	V50+
121	13:01	Joseph Walker	Belper BC	M
122	13:02	Ben Plowman	Sheffrec CC	VM
123	13:03	Alastair Merrill	VC 10	V50+
124	13:04	Matthew Dennis	University of Nottingham C C	M
125	13:05	Darren Miller	Fusion Cycling Club Dronfield	VM
126	13:06	Danny Lake	360VRT	VM
127	13:07	Luke Allen	Sheffrec CC	M
128	13:08	Dan Letherbarrow	Cheltenham & County Cycling Club	M
129	13:09	Jake Wade	Lindsey Roads Cycling Club	M
130	13:10	Robert Cornford	myhillcycling.co.uk	M
131	13:11	Jacob Lock	Cliff Pratt Racing	M
132	13:12	Lilja Raine	Velo Bavarian	W
133	13:13	Nicholas Trbovic	Elysium Kalas Race Team	M
134	13:14	Brendan Hirst	Rugby Racing Cycling Club	V50+
135	13:15	Harvey Thomas	Bristol Road Club	JM
136	13:16	Dan Cox	East London Velo	M
137	13:17	Oliver Tandy	Solihull CC	M
138	13:18	Maya Branfoot	Wahoo Le Col	W
139	13:19	Morgan Newberry	Loughborough Lightning / TRG	W (C5)
140	13:20	Gavin Alcock	7 Hills Cycling Club	VM
141	13:21	Tom Lindley	Team Sheffield	JB
142	13:22	James Stockton	Buxton CC/Sett Valley Cycles	M
143	13:23	Ruby Isaac	Welland Valley CC	JG
144	13:24	Christopher Peach	Ilkeston Cycle Club	M
145	13:25	Oliver Humphreys	National Clarion CC	VM
146	13:26	Noah Starbuck	Sleaford Wheelers Cycling Club	JM
147	13:27	Steven Morrow	Chorlton Velo	M
148	13:28	Jude Alcock	Sheffield Youth Cycling Club	JB
149	13:29	Dannielle Watkinson	LND Academy	W
150	13:30	Jon Wild	Veloviewer	M



## Rider List & Start Times

No.	Start	Name	Club/Team	Cat
151	13:31	Alex Whitmore	Ratae RC	M
152	13:32	Charlie Openshaw	Team Lifting Gear Products	VM
153	13:33	Erin Avill	Storey Racing	W
154	13:34	Leo Guilfoyle	FTP ( Fulfil The Potential ) Race Team	M
155	13:35	Scott Palmer	Aerologic RT	M
156	13:36	Tom Andrews	Team Lifting Gear Products	M
157	13:37	Evan Schofield	D2D Sheffield RT	JM
158	13:38	Callum Stewart	East London Velo	M
159	13:39	Maria Holdcroft	Cowley Road Condors CC	W
160	13:40	Jacob Bradbury	Manchester Wheelers	JM
161	13:41	Emil Howell	Matlock CC	JM
162	13:42	Cameron Walker	Elevate RT	M
163	13:43	Lucy Harris	Cambridge University CC	W
164	13:44	William Jeffery	Saint Piran	M
165	13:45	Frances Owen	Wahoo Le Col	W
166	13:46	Steven Prince	Ludlow Brewery Race Team	VM
167	13:47	Ewan Tuohy	Dartford Road Club	M
168	13:48	Gemma Sargent	Team BoomPods	VW
169	13:49	Alex Raynard	Trek Bicycles Bakewell	M
170	13:50	Eamonn Postlethwaite	ESV Manchester	JB
171	13:51	Taylor Hill	Cycling Sheffield	M
172	13:52	Lewis Smith	Sheffield Youth Cycling Club	JM
173	13:53	Abi Plowman	Jadan Vive Le Velo	W
174	13:54	Ashley Wilcox	Congleton CC - MyWindsock	M
175	13:55	George Stephen	Beeston Cycling Club	JM
176	13:56	Harry MacFarlane	TAAP Endura	M
177	13:57	James King	OVb	M
178	13:58	Marcus Cockerill	Loughborough Students CC	M
179	13:59	Tom Parsons	Team Enable - M.I. Racing - McCann	M
180	14:00	James Wordsworth	Cycling Sheffield	M
181	14:01	Rebecca Waterfield	Velo Bavarian	W
182	14:02	Tobi Ng	Team PB Performance	M
183	14:03	Ryan Williams	Beeston Cycling Club	JM
184	14:04	James Hartley	Cycling Sheffield	M
185	14:05	Josh Coyne	Bpm Coaching	M
186	14:06	Nicholas Latimer	Team Lifting Gear Products	VM
187	14:07	Corinne Side	Pro-Noctis - Redchilli Bikes - Heidi Kjeldsen	W
188	14:08	Jack Hartley	Beeston Cycling Club	M
189	14:09	Isaac Oliver	Sheffield Youth Cycling Club	M
190	14:10	Cameron Biddle	HUUB WattShop	M
191	14:11	Adam Kenway	Team Brother UK	M
192	14:12	Emilie Verroken	Team Lifting Gear Products	VW
193	14:13	George Wood	Cycling Sheffield	M
194	14:14	Andy Nichols	Team Lifting Gear Products	M
195	14:15	Calum Brown	Wold Top The Edge Pactimo	M
196	14:16	GreggBooker	SUMMAT CC	M

JB = Juvenile Boy - JG = Juvenile Girl - JM = Junior Men - JW = Junior Women - M = Senior Men - W = Senior Women  
 VM = Veteran Men - VW = Veteran Women - V50+ = Veteran Men over 50.

## Officials & Helpers

Event Organiser:	Marc Etches
Chief Marshal:	Bev Randell-Eyre
Signing On:	Vaness Etches & Janine Morrall
Catchers:	Chris Lawrence, Tom Hutchinson & Phil Makinson
Commentators:	Vin Cox & Rapid Rich Stoodley
Marshals:	Sheffrec Cycling Club
First Aid:	St John Ambulance
Cark Park:	Little Longstone Parish Group
Timekeepers:	John Clarke (VTTA N Mids) Christine Minto (Birdwell Wheelers) Philip Minto (Birdwell Wheelers)
Results Clerk:	Rob Wormald
Results Team:	Karl Wooffindin & Mark Rusby
Social Media:	Kian Ward

## Individual Category Record Holders

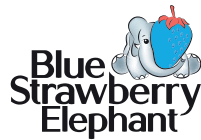
Senior Men - Malcolm Elliott Rutland CC 1:14.2 (1981)
Senior Women - Bithja Jones Pankhurst Cycles 1:37.5 (2021)
Veteran Men (40-49) - Steve Tait OVB 1:25.3 (2019)
Veteran Women - Bithja Jones Pankhurst Cycles 1:37.5 (2021)
Veteran Men (50+) - Simon Froberg Dinnington Racing Club 1:41.3 (2021)
Junior Men - Robert Gray HMT Academy with JLT Condor 1:23.6 (2016)
Junior Women - Jessie Walker Matrix Fitness – Prendas 1:53.5 (2012)
Juvenile Boy - Oliver Rees Holmfirth CC 1:30.4 (2016)
Juvenile Girl - Lily Greenhalgh East Bradford CC 1:58.2 (2016)
Tandem - Craig Malkin & Peter Howard Worrall Wheelers 2:57.5 (2019)

veloviewer 93 1930-2023 RD  
MONSAL HILL CLIMB

veloviewer



Race manual design by:



Follow us on socials



@monsalhillclimb

#monsalhillclimb.com

www.monsalhillclimb.com