

# SYDENHAM WHEELERS CC



## The John Tully Memorial 10 Mile Time Trial

Promoted for and on behalf of Cycling Time Trials under their Rules and Regulations

Sunday 12<sup>th</sup> May 2019, 06.30 – Q10/19

H.Q. Weald of Kent Grammar School, Tudeley Lane, Tonbridge, Kent, TN9 2JP

### Event Secretary:

Bob Loader  
1 Lea Road  
Sevenoaks  
TN13 1QP

[rloader@sky.com](mailto:rloader@sky.com)

01732 459789

07840 949476 (no texts)

### Time Keeper

Paul Mepham  
VC Elan Harry Perry Cycles

### Assistant Timekeeper

Mick Morris  
CC Bexley

### AWARDS

Scratch	Vets	Fastest Lady	Category Winners
First £20	First (OAS) £15	£10	A, B, C & D £10
Second £15	Second (OAS) £10		
Third £10			

### Fastest Team of Three Riders

£5 Each

(One prize per rider except team)

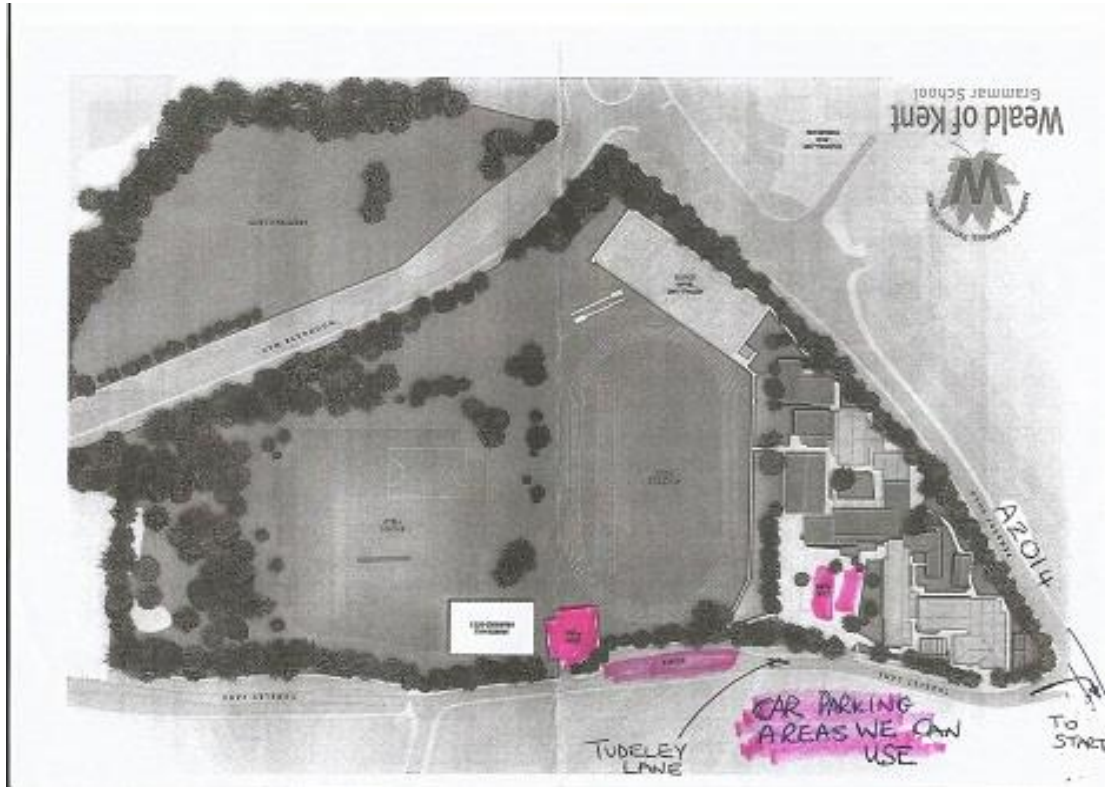
### COURSE DETAILS - Q10/19

Start on A26 one mile south of Tonbridge, at kerb point 50 yards north of Marbledon and 10 feet past 40 mph speed limit signs (TQ580445). Proceed north to take first left to join the A21 Proceed on A21, left on slip road to the Weald RAB, using the left hand side of the carriageway.(5.4 miles). Encircle the RA and retrace on the A21 southbound, to finish at the leading edge of the last bridge before the A26 slip road (TQ 575451).

### Course Notes:

- Riders should not arrive at the start more than 5 minutes before their allotted start
- Warming up on the course is forbidden once the event has started
- Riders risk disqualification if they perform U-turns in the start or finish areas or use these areas as a public toilet
- Good luck and enjoy your ride

# Event H.Q. In Weald of Kent Grammar School



**Please only park in Tudeley Lane in the Coach Parking Area Indicated**

## **NOTES**

1. **Numbers will be at the HQ - NOT at the start. You **MUST** sign on!!**
2. **All competitors in open (Type A) events are required to return to the event HQ, hand in their number(s) and SIGN OUT. No sign out, no result.**
3. **The school Reception area only will be used as HQ centre for changing and toilets**
4. **A rear light is strongly recommended whilst warming up and riding the event.**
5. **No vehicles associated with competitors are to stop, load or unload riders within 300 yards of the start timekeeper, or on verges between the finish and the A26.**
6. **The grounds of Marbledon are strictly private and barred to competitors**
7. **No shoe plates to be worn in the HQ.**
8. **Your number may be exchanged for a cup of tea or coffee after the event.**
9. **No cycling shoes to be worn in the HQ.**

CTT advise you to wear recognised protective headgear. CTT regulations state that all Junior and Juvenile riders **MUST** wear such headgear.

IN THE INTEREST OF YOUR OWN SAFETY CYCLING TIME TRIALS AND THE EVENT PROMOTERS STRONGLY ADVISE YOU TO WEAR A HARD SHELL HELMET THAT MEETS AN INTERNATIONALLY ACCEPTED STANDARD

**PLEASE KEEP NOISE TO A MINIMUM AND NOTE THERE CAN BE NO USE OF TURBO TRAINERS**