



Risk Assessment

Course/Road(s) Assessed: Brawdy Airfield MoD

Course: Brawdy 10 mile TT

Date of Assessment/Review: 16th June 2021

Name of Assessor: Richard Coomer

Course Description: Start three quarters of the way (left to right) along the large painted white take-off line located 125 yards from the SE end of the main NW/SE runway. Proceed NW along this runway, sweeping right after 100 yards to join the NE part of the other main NE/SW runway. Follow this to its end at 900 yards, taking the third sweeping taxiway on the left. Follow this back round SW and then turn right at 0.75 miles on to a smaller concrete taxiway in a NW direction. Stay on this taxiway 0.6 miles until a sweeping left curve turns 180 degrees all around the NW end of the NW/SE runway, crossing it at 1.5 miles, before returning another 0.6 miles on the other side. The taxiway sweeps right onto a larger area of tarmac (2.4 miles). Soon after turn right and then left to loop through the first of 3 old hangars, before turning left and left again to turn 180 degrees and retrace the same taxiway to the centre of the main NW/SE runway at 2.9 miles. Turn 90 degrees right to join it, proceeding in a SE direction to the intersection of all 3 runways at 3.2 miles. Half turn right to join the main NE/SW runway in a SW direction. Follow this almost to its end (keep on the right side) and take the second taxiway exit on the right (4.0 miles), then keeping tight left to turn 180 degrees and rejoin the same NE/SW runway in the opposite direction (keep right). Take the first taxiway exit on the right at 4.5 miles and follow it back to the start at the SE end of the NW/SE runway (4.9 miles), where turn left onto the runway again to crossing the white painted takeoff line (5.0 miles). Repeat for second lap, the finish is when you cross the white painted takeoff line second time round (10.0 miles).

Traffic Flows: Nil, private property closed to all traffic

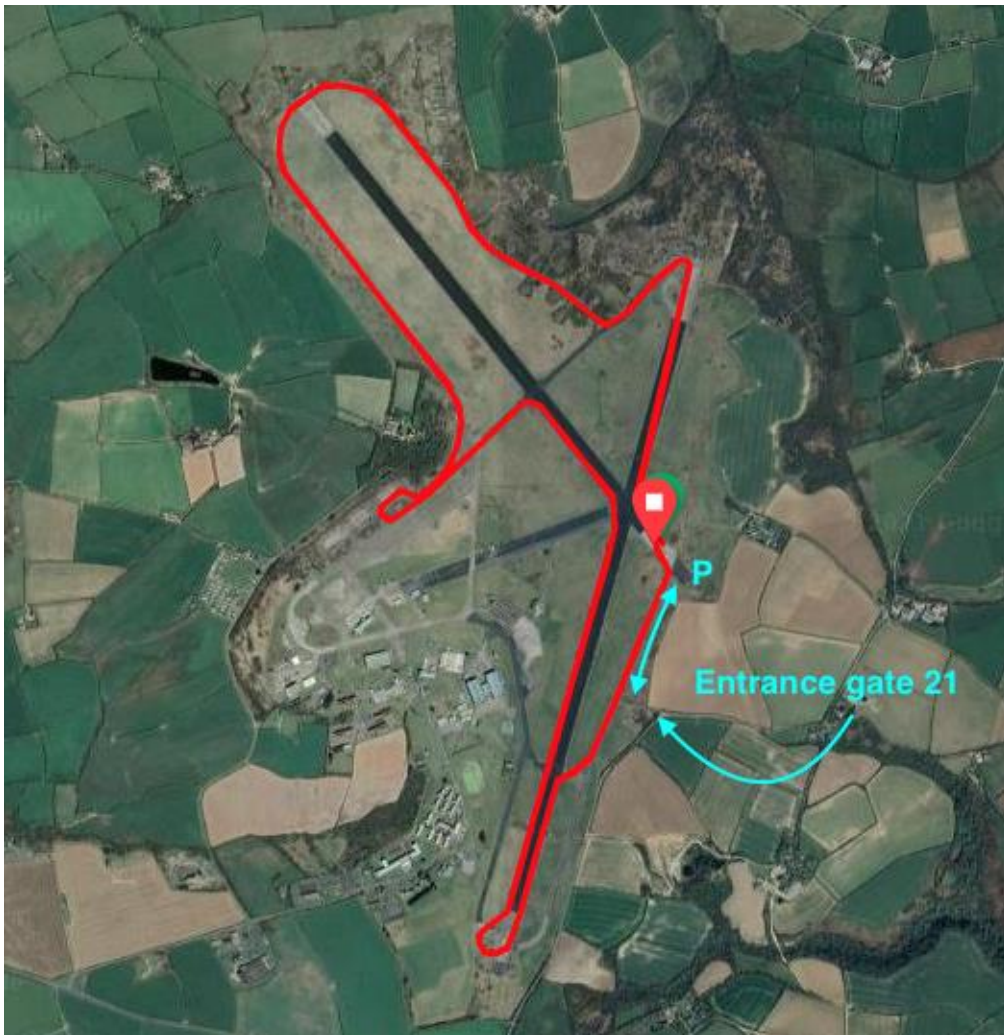
Course/Event History: The 8 km lap is used for training purposes by MoD staff posted to Brawdy. No previous public use.

Key Identified Risks

Distance	Location	Identified Significant Risk/Hazards	Level of Risk Low/Med/High	Measures to reduce Risk (if applicable)
0 miles (and 5 miles lap 2)	START: three quarters of the way (left to right) along the large painted white take-off line	Riders returning from the first 5 mile lap rejoin the same course for their second lap	Low	Start is located three quarters of the way along the white line, i.e. towards the right. The crossing point and finish is located one quarter of the way across, towards the left side. These will be clearly marked with traffic cones.
0.75 miles (and 5.75 miles lap 2)	At the right turn onto a smaller concrete taxiway	Some of the taxiway has vegetation growing between concrete slabs, especially towards the left side. The surface is smooth.	Low	Riders will be reminded to keep towards the right side where there is minimal vegetation

2.4 and 2.8 miles (and 7.4 and 7.8 miles lap 2)	A 200 yard stretch before and after the hangar turn.	Riders will be passing one another head on this section	Low	Riders will be advised to keep right. In addition the 2 opposing sections will be suitably marshalled and coned.
2.4 – 2.6 miles (and 7.4 – 7.6 miles lap 2)	180 degree turn through the footprint left by the first of 3 old hangars	The concrete slabs have some vegetation and small gap left where the sliding hangar doors were, with a smooth central space.	Low	Riders will be directed to the central smooth part and around this turn by traffic cones and suitable marshals
4.0 miles (and 9.0 miles lap 2)	The right hand taxiway off the runway, and subsequent left handed turn	Some of the taxiway has light grassy vegetation growing between concrete slabs, though the surface is otherwise clean and smooth	Low	Riders will be reminded to keep towards the left side where there is minimal vegetation
3.7 – 4.0 and 4.2 – 4.5 miles, (and 8.7 – 9.0 and 9.2 to 9.5 miles lap 2)	A 400 yard section of main NE/SW runway before and after the SW turn	Riders will be passing one another head-on this section	Low	The runway is wide, approx. 50 yards. Riders will be reminded to keep right in both directions, and a marshal will be there.
4.7 – 5.0 miles (and 9.7 – 10.0 miles lap 2)	Section of taxiway	This is also the entrance and exit for cars, coming from gate 21 and driving to the designated parking area behind the start/finish, therefore riders may encounter cars here	Low	Riders should keep left, as per normal road rules. Cars and riders will be warned to be careful before the event and signage will be placed to remind them again on arrival.
10 miles	FINISH: finish is located one quarter of the way across the painted white take of line, towards the left side.	Riders completing their first lap may overlap with riders completing their second.	Low	Finish will be clearly marked with traffic cones and a finish flag. Riders completing their second lap will be directed left away from continuing riders.
The small junctions or entrances to farms/ facilities that are not identified in this risk assessment have been considered, however are not considered significant to pose a risk and therefore have not been noted. Getting lost is a modest risk with an unusual circuit course on an aerodrome, but sufficient marshals and cones should negate this risk.				

Date of original assessment: 16th June 2021



Main map of course



Close up of start/finish, with event parking. No driving anywhere else on the airfield is allowed.