



Risk Assessment

Course/Road(s) Assessed: Old Loans Road, Loans, KA10

Course: Dundonald Hill (Front)

Date of Assessment/Review: 30/08/21

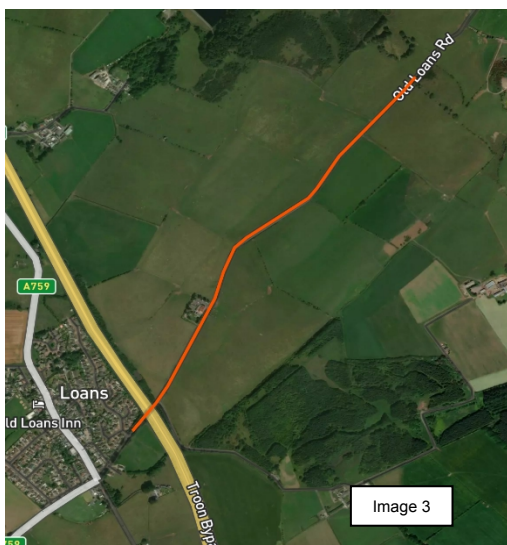
Name of Assessor: Gordon Fields DipNEBOSH

Course Description:

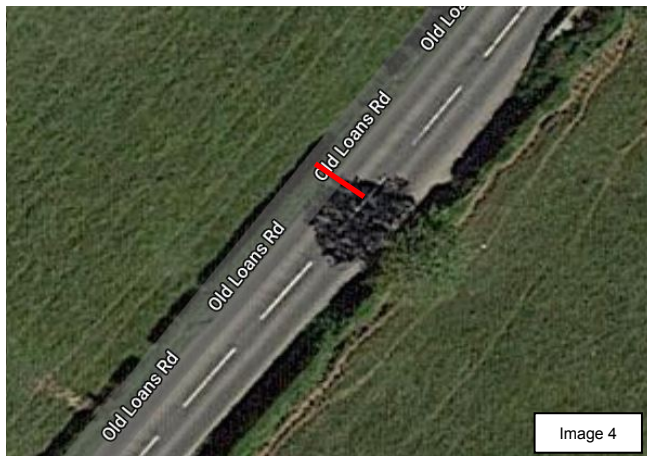
The starting line is positioned just after the Stable Wynd junction on Old Loans Road (see image 1&2).



The course proceeds from the starting point (marked in red above) for 0.9 miles (1.448km). (see image 3)



The race ends at the top of the hill with the timekeepers positioned in the layby on the opposite side of the carriageway. (see images 4 and 5)



Traffic Flows: No traffic flow changes to accommodate the event and there will be no significant impact to other road users during the event. The event is on Old Loans Road only and does not require riders to turn off onto other roads as part of the race, minimising the road risk.

Course/Event History:

Key Identified Risks

Distance	Location	Identified Significant Risk/Hazards	Level of Risk Low/Med/	Measures to reduce Risk (if applicable)
0 miles	START: Stable Wynd Junction	<ul style="list-style-type: none"> Officials/marshals and vehicular interaction on the road and at the junction Riders and vehicular interaction on the road and at the junction 	Low risk with controls in place	<ul style="list-style-type: none"> Minimise the number of officials/marshals standing on the road Officials to wear hi-visibility clothing at all times Marshals to stand a designated location Event signage in place Officials/marshal attend pre-race safety meeting Marshals watching for oncoming traffic at start point Safe releases of riders at all times All riders must use rear flashing or static red light on their bike All riders must comply with current road rules as defined in the highway code

100 meters	Craiksland Road Junction	<ul style="list-style-type: none"> Riders and vehicular interaction where traffic is turning on to old loans road 	Low risk with controls in place	<ul style="list-style-type: none"> Riders have the right of way on road Riders to exercise caution and be vigilant at all times whilst on the road Hi-visibility marshals positioned at location
350 meters	Highgrove House Hotel	<ul style="list-style-type: none"> Riders and vehicular interaction where traffic coming from the opposite direction are turning into the hotel 	Low risk with controls in place	<ul style="list-style-type: none"> Riders have the right of way on the road Riders to exercise caution and be vigilant at all times whilst on the road Hi-visibility marshals positioned at location road
1448 meters	FINISH: Old Loans Road Layby	<ul style="list-style-type: none"> Officials/marshals and vehicular interaction on the road and at the layby Riders and vehicular interaction on the road and at the layby 	Low risk with controls in place	<ul style="list-style-type: none"> Minimise the number of officials/marshals standing on the road Officials to wear hi-visibility clothing at all times Marshals to stand a designated location Event signage in place Prevent riders from congregating on layby.

The small junctions or entrances to farms/ facilities that are not identified in this risk assessment have been considered, however are not considered significant to pose a risk and therefore have not been noted.

Date of original assessment:
30/08/21